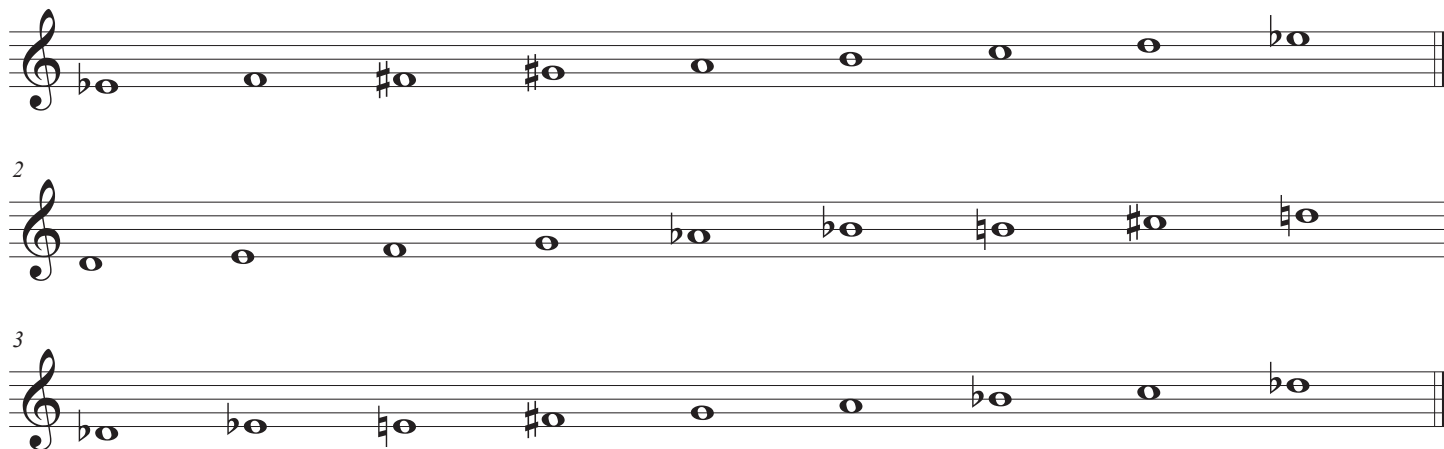
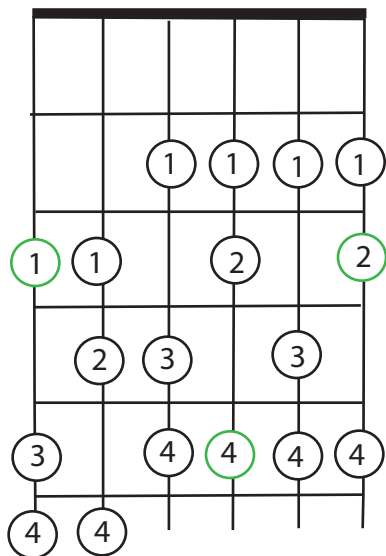


Octatonic (diminished) Scale

The octatonic (diminished) scale is constructed of notes alternating in a whole step-half step sequence. It, like the whole tone scale, is symmetric in that it has three distinct patterns. It contains two fully diminished 7 chords in each of the scales. If the scale is started with the whole step, half step pattern it fits nicely over diminished chords. If it is begun with a half-step, whole step pattern it fits nicely with dominant flat 9 chords such as a C7b9.



G Octatonic (over diminished chords)



F# half diminished (over 7b9 chords)

